

Frame for marmoset chair

MMC-4000

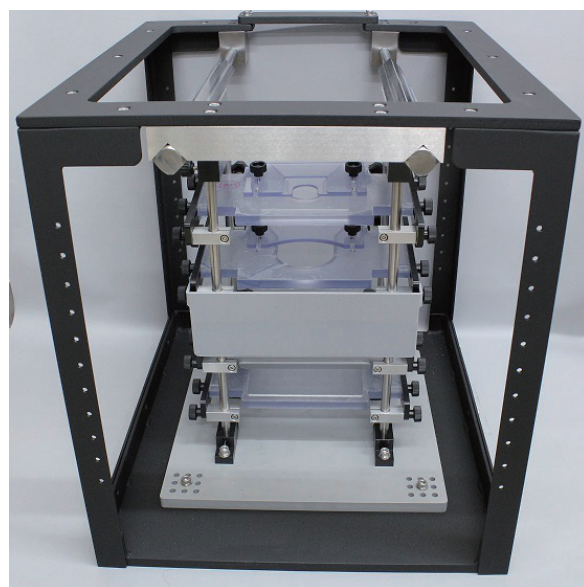
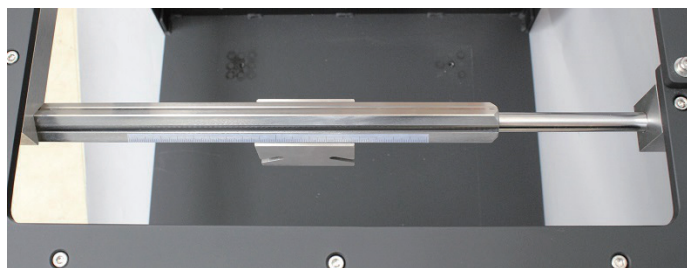
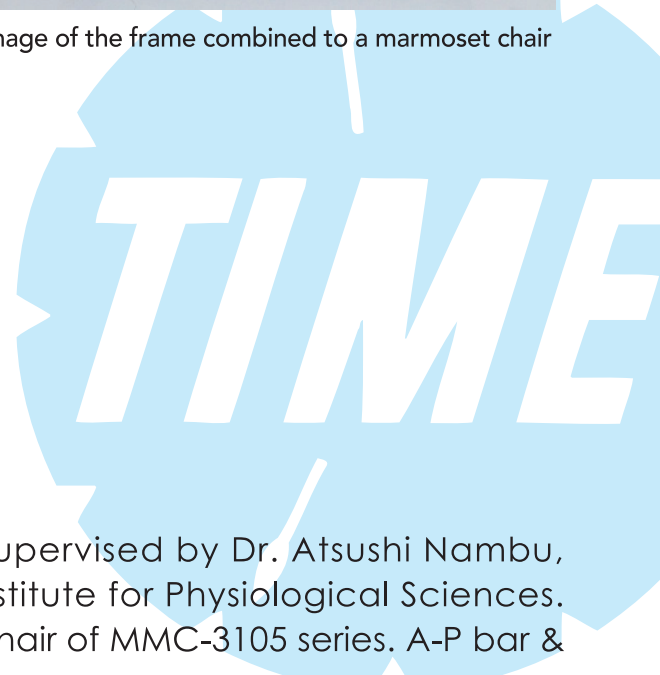


Image of the frame combined to a marmoset chair



A-P bar & ear bar block



This is the frame for marmoset chair, which is supervised by Dr. Atsushi Nambu, Division of System Neurophysiology, National Institute for Physiological Sciences. Please use the frame combined to a Marmoset chair of MMC-3105 series. A-P bar & ear attachment are included.

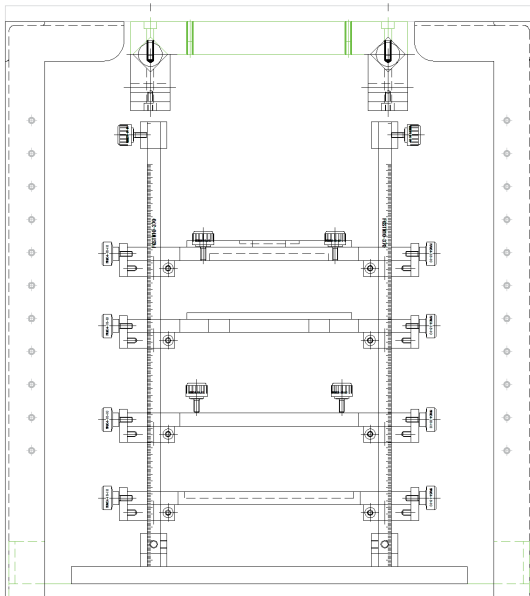
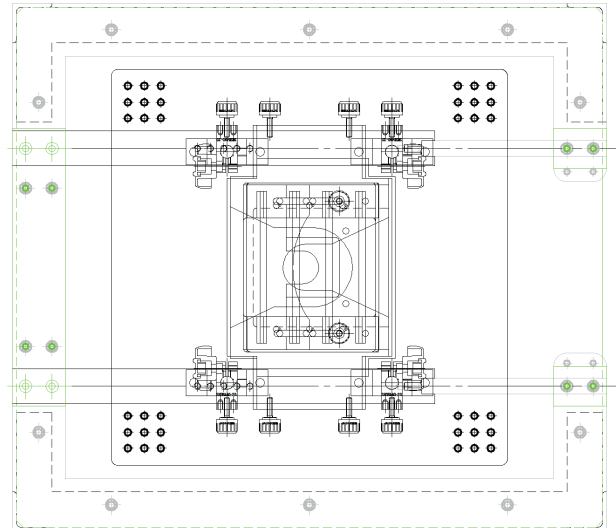


Frame for marmoset chair

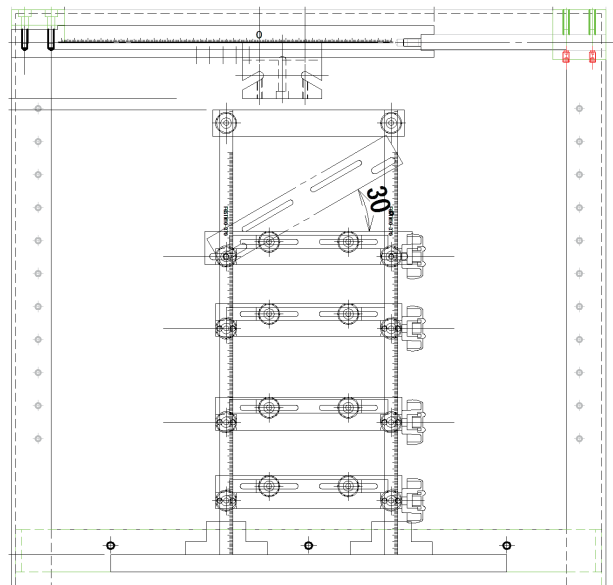
MMC-4000

Image of the frame combined to the marmoset chair

top



front



side

manufacturer



O' HARA & CO., LTD.

4-28-16 Ekoda, Nakano-ku, Tokyo 165-0022, JAPAN

TEL 81-3-3389-2451

FAX 81-3-3389-2453

<http://www.ohara-time.co.jp>