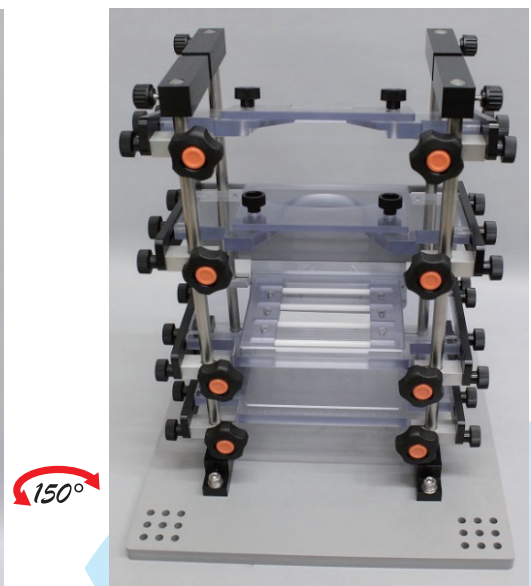
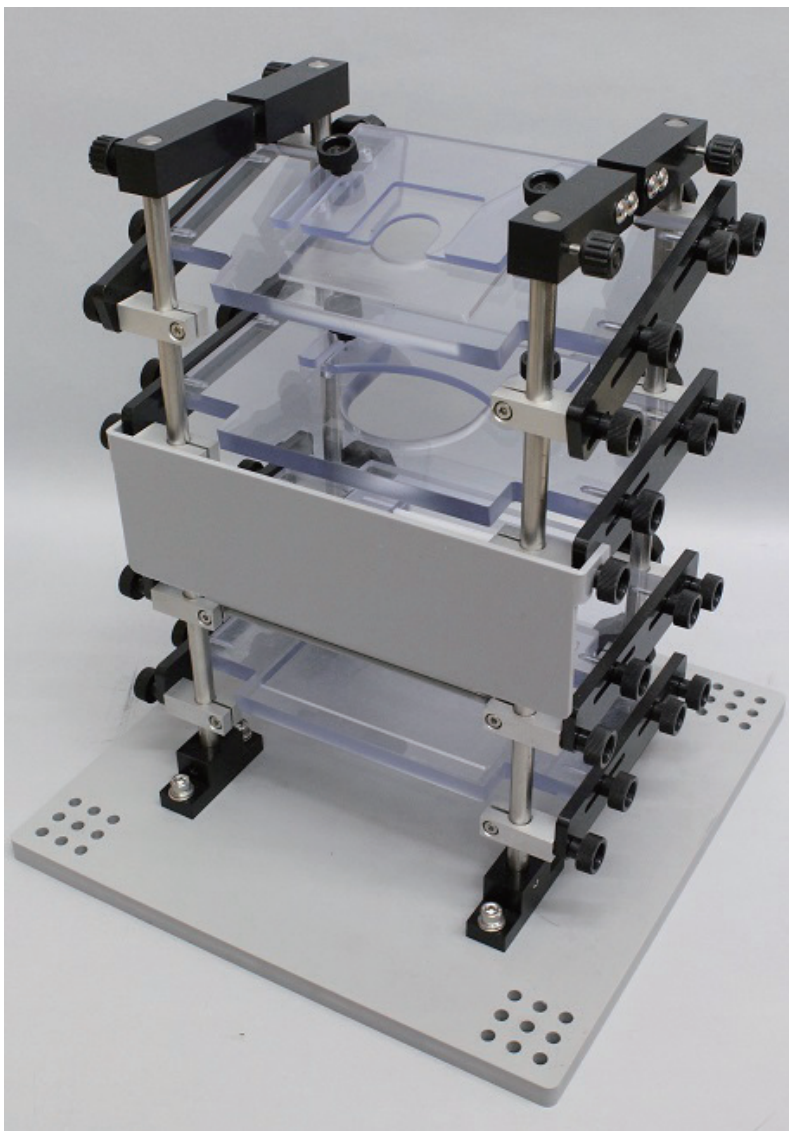


Marmoset chair

MMC-3105



TIME

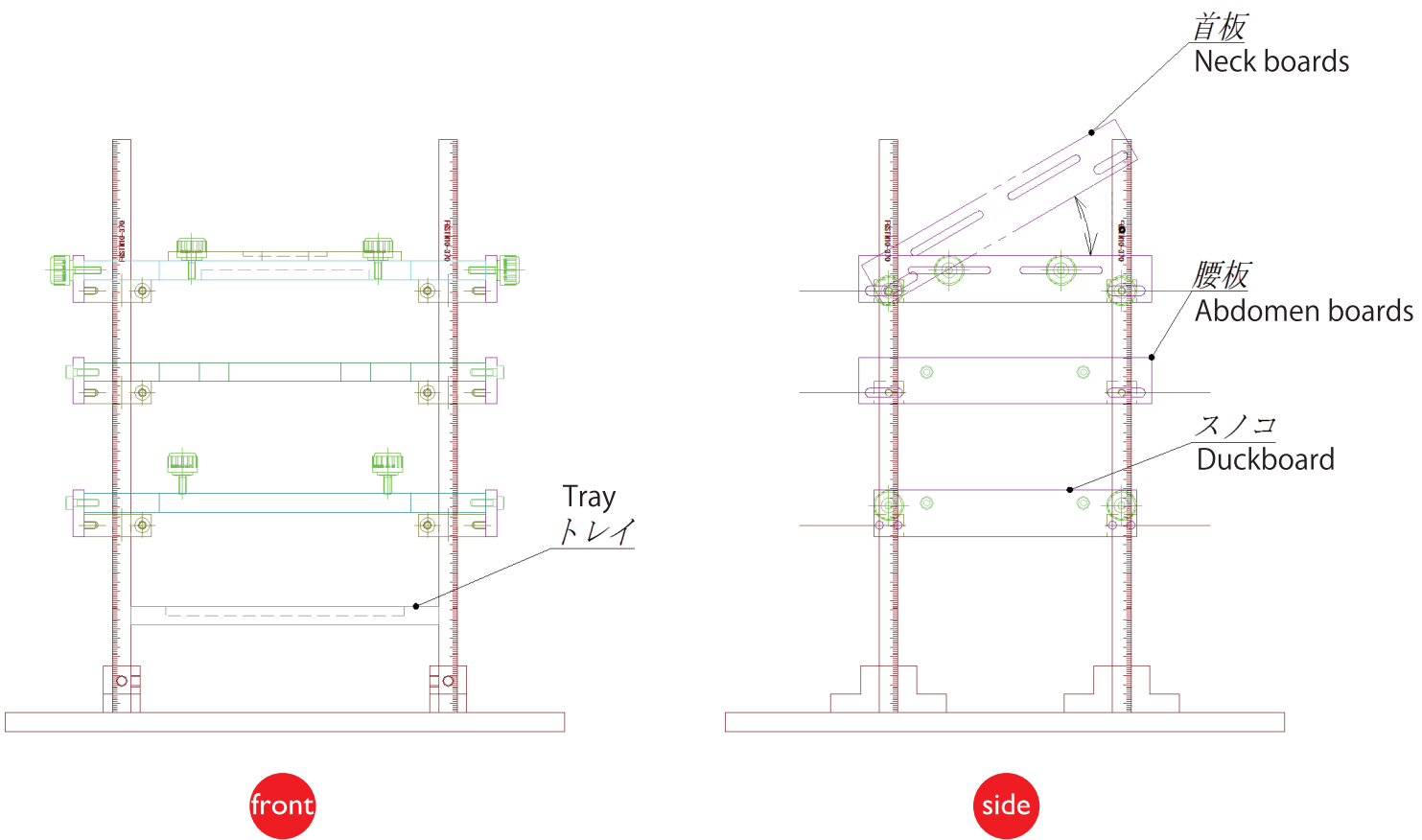
This is a marmoset chair, which is supervised by Dr. Atsushi Nambu, Division of System Neurophysiology, National Institute for Physiological Sciences. It can fix and retain a marmoset for long period. Neck boards, abdomen boards and a duckboard can be moved and adjusted easily for each individual. So marmoset cannot touch his head by hands.



Marmoset chair

MMC-3105

Outline of the marmoset chair



manufacturer



O' HARA & CO., LTD.

4-28-16 Ekoda, Nakano-ku, Tokyo 165-0022, JAPAN

TEL 81-3-3389-2451

FAX 81-3-3389-2453

<http://www.ohara-time.co.jp>