

Drinko-measurer

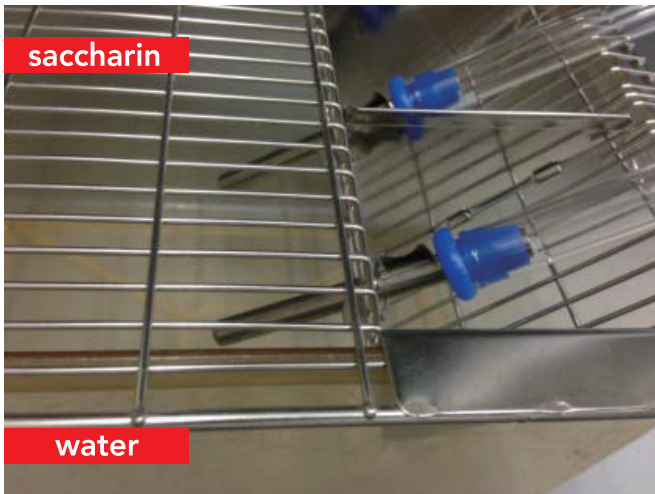


for Mouse/Rat

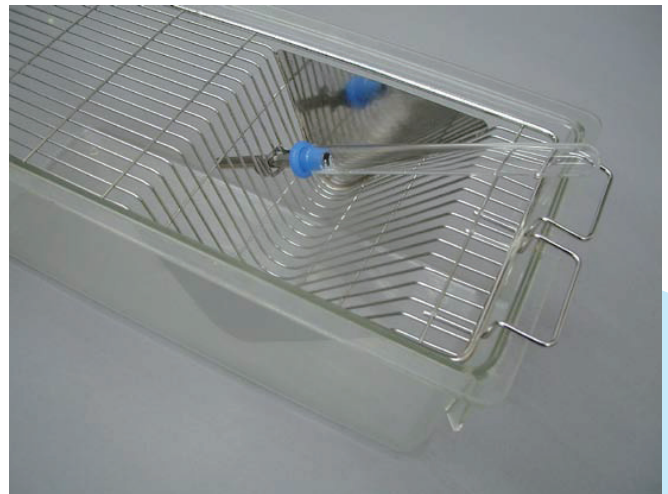


measuring fluid intake
&
conditioned taste aversion

Conditioned taste aversion



Fluid intake



This is an equipment to measure a small quantity of drinking in a short period. If several bottles are used in a cage at the same time, it is applicable for experiment of the conditioned taste aversion. All bottles are designed to reduce the amount of leakage and drying. Each bottle is equipped with a clip that allows for bottle to be attached to the wire of the cage top. This helps to prevent from subject animals performing any mischief behavior with the bottles during testing. All components of the bottles are autoclavable, so it helps to reduce concerns for contamination.



Drinko-measurer

DM-GI

for Mouse / Rat

Tube set



60mm, 90mm, 120mm from top

• Tube length	65mm (2.5 inches) 90mm (3.5 inches) 120mm (4.5 inches)
• Clip	pen type clip
• Material	body of cap ; silicon tube ; stainless (SUS304) pen type clip (SUS304)



Bottle



Top is 15ml and bottom is 10ml

• Volume	15ml bottle 10ml bottle
• Material	heat-resistant glass

Please chose
one tube length in view
of distance to tube tip
to mouth of animal,
rack space.

Ultrasonic cleaning
&
autoclave
are available for
all parts
after disassembly.

manufacturer



O' HARA & CO., LTD.

4-28-16 Ekoda, Nakano-ku, Tokyo 165-0022, JAPAN

TEL 81-3-3389-2451

FAX 81-3-3389-2453

<http://www.ohara-time.co.jp>